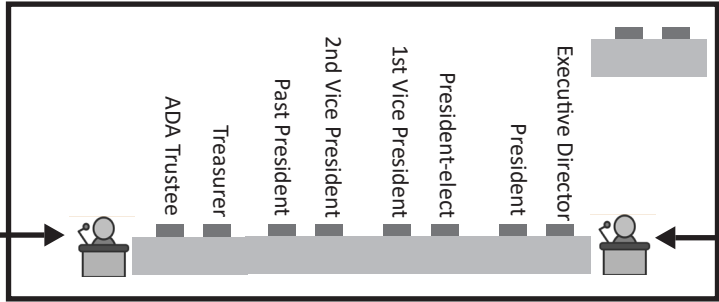


**House of Delegates**

*During any session of the House only delegates seated on the floor will vote.*

Guests speakers or presenters

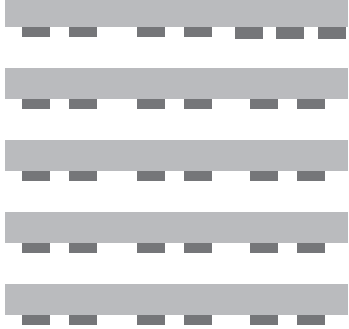


FDA Legal Counsel

Speaker of the House

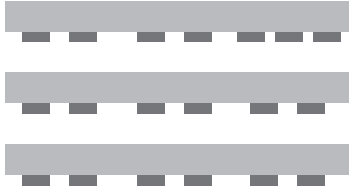
Point of Order Microphone

**West Coast Delegation**



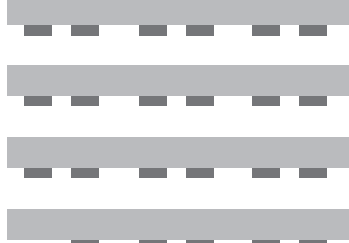
30 Delegates/1 ED

**South Florida Delegation**



18 Delegates/1 ED

**Central Florida Delegation**



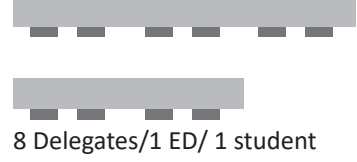
21 Delegates/1 ED/ 1 student

**Northwest Delegation**



7 Delegates/1 ED/ 1 student

**Northeast Delegation**



8 Delegates/1 ED/ 1 student

**Atlantic Coast Delegation**



16 Delegates/1 ED

**FDA Trustees**



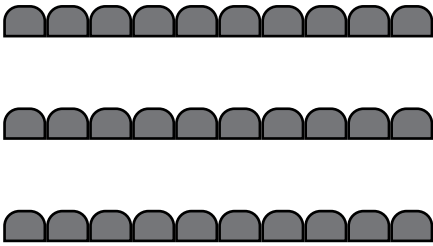
Pro



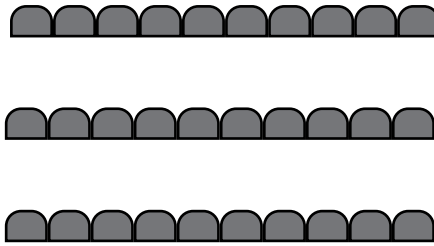
Con

voting tables

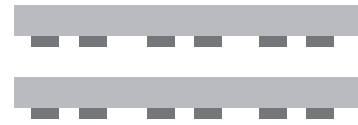
**Alternate Delegates**



**Guest Seating**



**FDA Past Presidents**



FDA Staff Seating